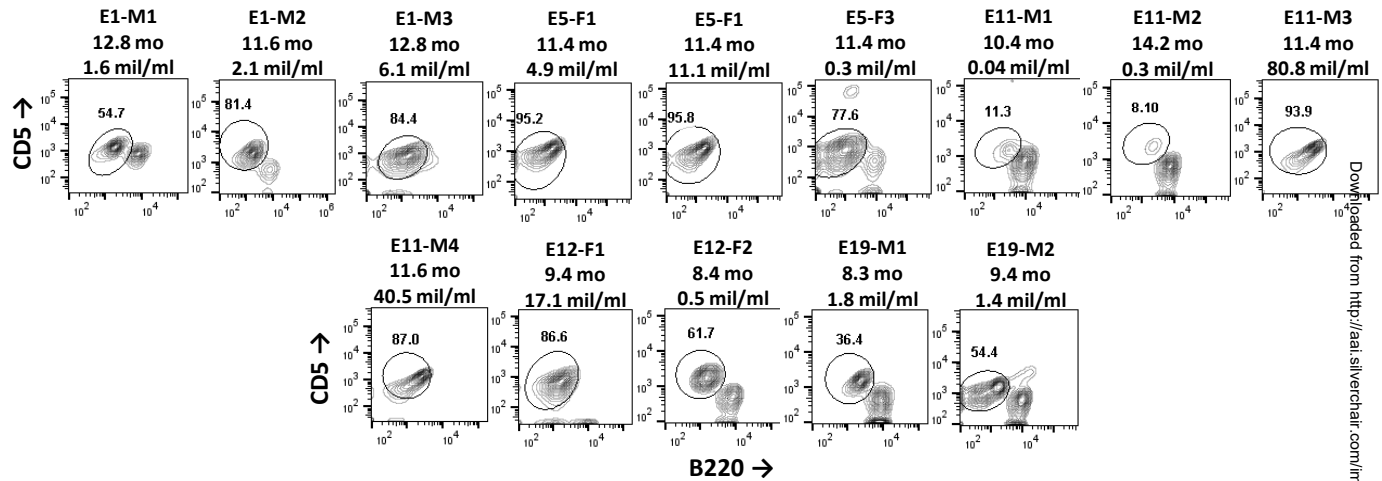
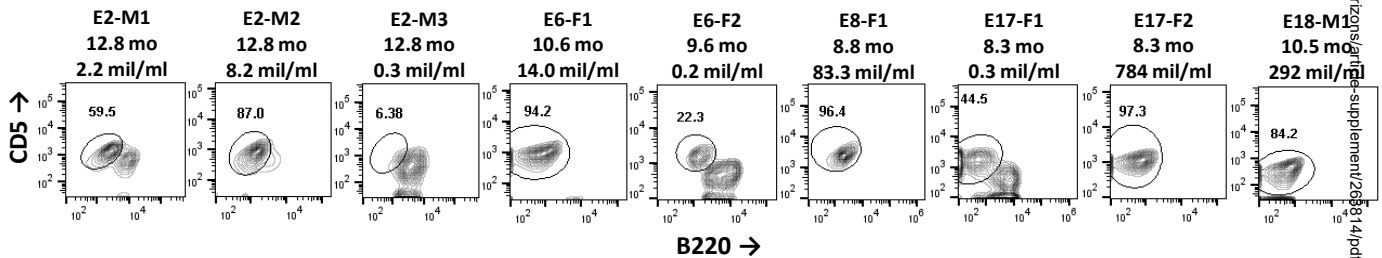


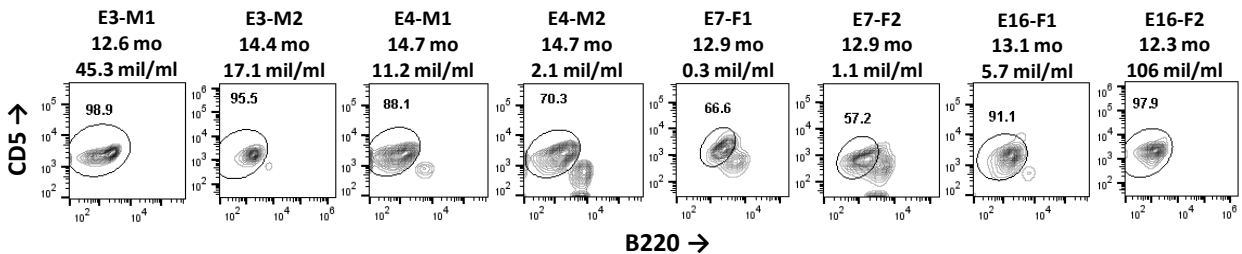
## A PBS cohort



## B SILV cohort

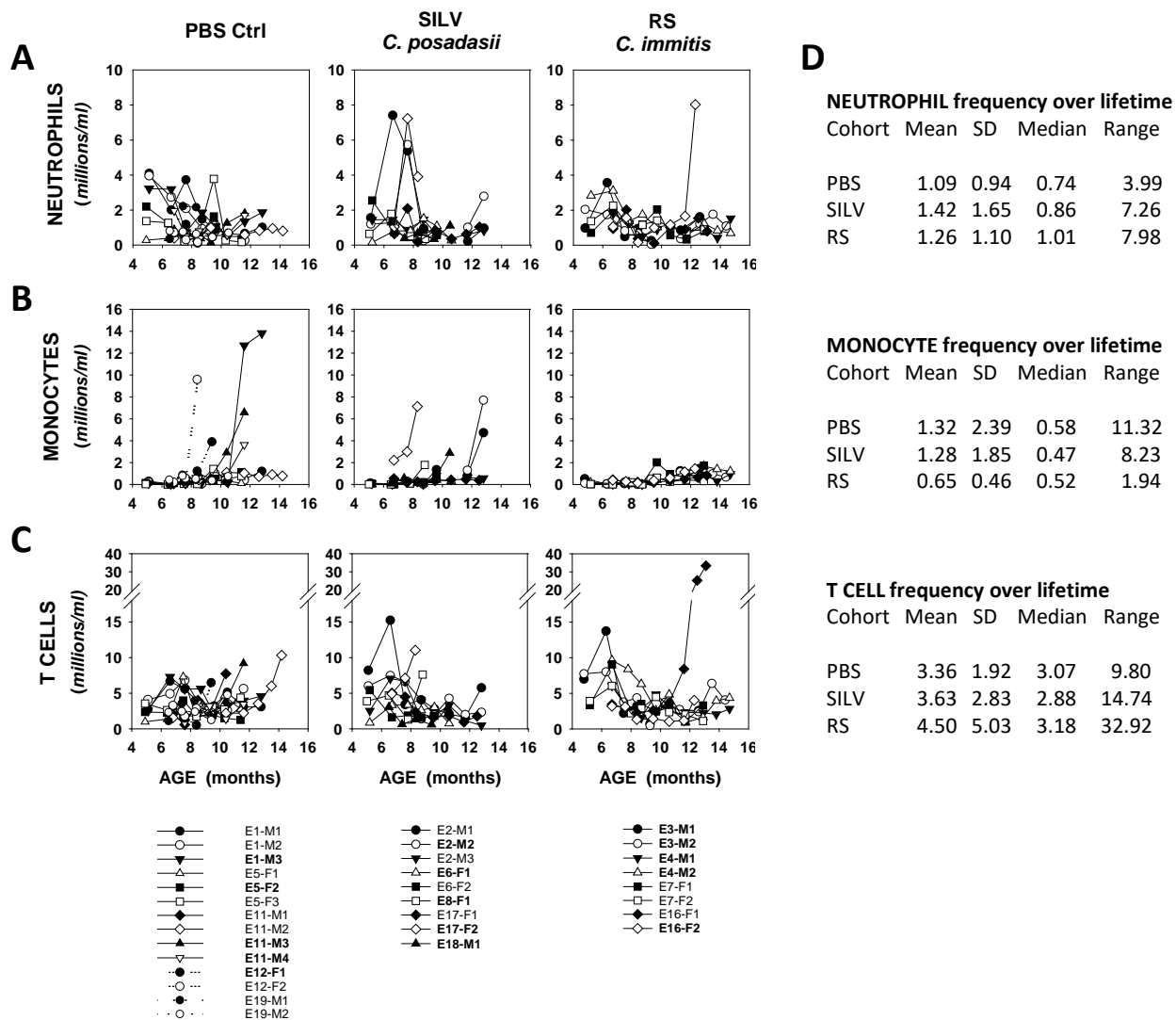


## C RS cohort



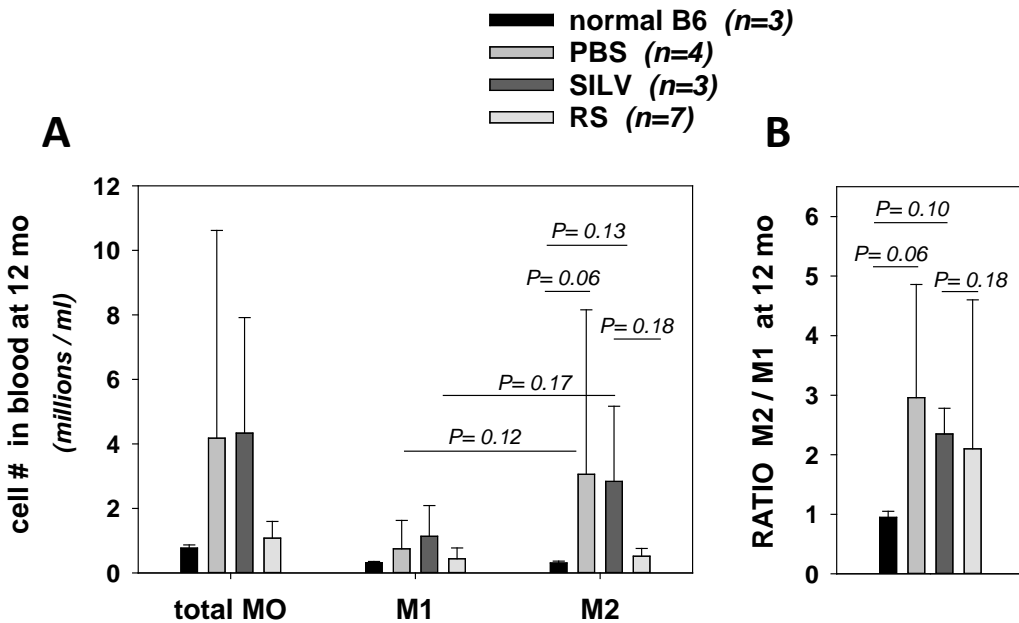
## Supplementary Figure 1

**CD5<sup>+</sup>/B220<sup>lo</sup> B cells within total B cells in last blood sample obtained from individual mice.** Contour plots show CD5 and B220 levels within total gated CD45<sup>+</sup>/CD19<sup>+</sup> B cells. Inserted numbers next to gated cells represent the % of total B cells within B-CLL gate (CD5<sup>+</sup>/B220<sup>lo</sup>). Above each plot is shown mouse ID, age of last blood sampling, and frequency of CD5<sup>+</sup>/B220<sup>lo</sup> B cells (million/ml). Blood samples were taken just prior to survival endpoint, except for E11-M2 (PBS cohort) and E3-M2, E4-M1 and E4-M2 (RS cohort) in which mice were euthanized at experiment termination (no clinical survival endpoint reached). We suspect differences in CD5 and B220 staining intensity between cell samples largely reflect: (a) differences in the number of cells present in the staining well that may have resulted in sub-saturating Ab in cases of high B-CLL count and (b) differences in the time of 4°C storage after sample staining and fixation (particularly relevant for samples E17-F1, E18-M1, and E19-M2). All the above samples, together with routinely stained fluorescence calibration beads, were run at the same flow cytometer settings.



## Supplementary Figure 2

**Blood levels of neutrophils, monocytes, and T cells over lifespan of control- and *Coccidioides*-exposed *TCL1-Tg* mice.** Frequency (millions/ml) of non-B cell leukocyte populations, (A) neutrophils, (B) monocytes, and (C) T cells, plotted as a function of age. Legend below each graph provides mouse identification codes (those in bold reflect mice with a B-CLL diagnosis). (D) Descriptive statistics for average neutrophil, monocyte, and T cell frequency within cohorts of mice over their lifetimes. No statistically significant differences between cohorts were noted by Kruskal-Wallis One Way Analysis of Variance on Ranks.



### Supplementary Figure 3

**Comparison of non-transgenic and hTCL1-transgenic C57BL/6 mice for blood frequency of total monocytes, M1 cells and M2 cells at 12 months of age.** (A) Bar graphs representing the frequencies of total monocytes (mean  $\pm$  SD) within 12 mo old normal C57BL/6 mice and similarly aged mice from this study's experimental cohorts (note: mice were all housed under similar conditions). For statistical analysis, pairwise comparisons were made using 2-sided, unpaired T-test for parametric data or Mann-Whitney Rank Sum test for non-parametric data. P values of  $< 0.2$  are shown. (B) Bar graph displaying M2/M1 ratios (mean  $\pm$  SD) within blood from the above mouse cohorts.