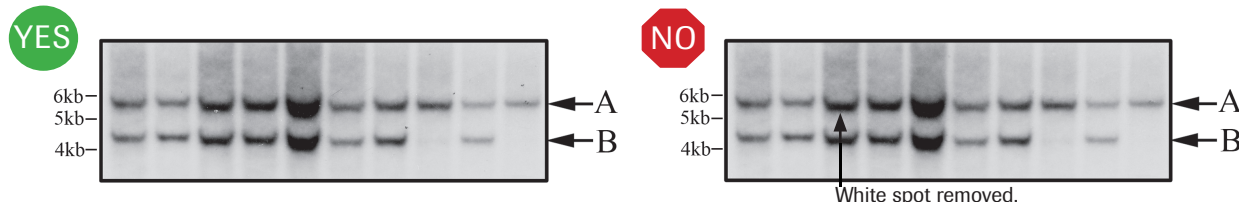


# Digital Image Dos and Don'ts

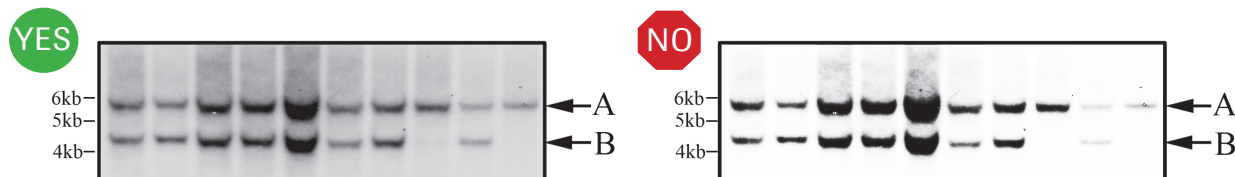


Before preparing manuscript figures, please read the Information for Authors at <http://www.jimmunol.org/info/authors#DigitallImages>

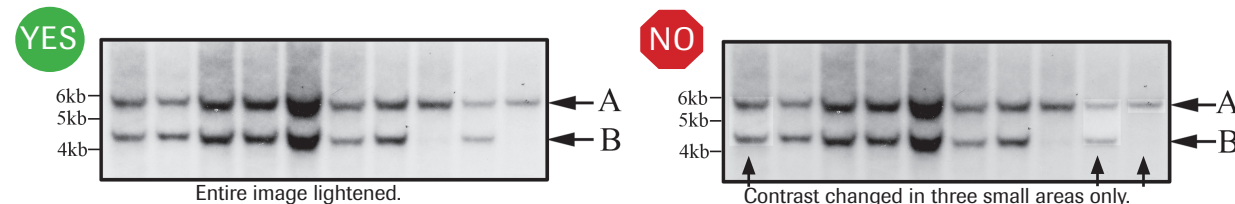
## 1. Do not erase any part of the image, including the background.



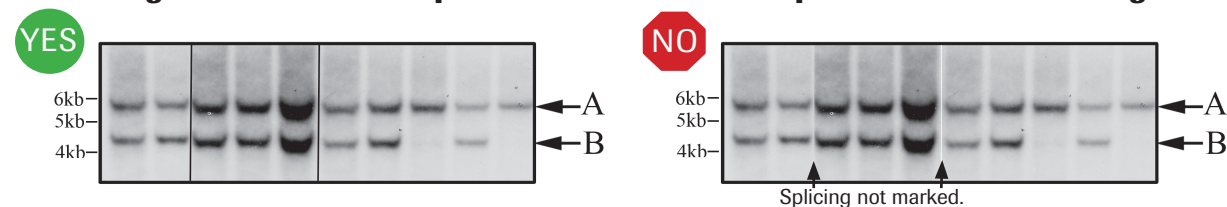
## 2. Do not use excessive contrast that removes background.



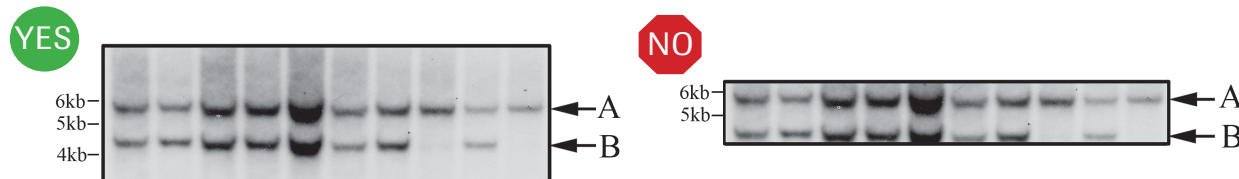
## 3. Make any adjustments to brightness or contrast equally across the entire image.



## 4. Indicate any splicing of data from a single experiment by contrasting (black or white) lines; state the manipulation in the legend. Images from different experiments should not be spliced to form a new single image.



## 5. Crop gels and blots conservatively, retaining important bands.



- All images submitted to *The Journal of Immunology* must accurately represent the original data.
- Original data (digital files, autoradiographs, films, etc.) for all experiments should be fully annotated, secured, and retrievable for up to 10 years.
- The original image file (raw data file) should be kept in an unprocessed and non-compressed file format.
- Figures that are compiled into multi-figure panels should be kept individually.